

Project Management Services

Allow us to take the hassle out of procuring materials, pricing, sub contractor management and day to day project needs. Because we know your vision, philosophy and design, we are in a prime position to manage the implementation phase. Costings for project management will depend upon the level of service required, scope of the project and location. Please contact us for a discussion & quote.

Construction Services

Where possible we would love to construct your playscape. The joy in seeing the design & vision come together on the ground is very satisfying. We use qualified builders, landscapers & down to earth natural builders. Contact us to see if we can build your Nature PlayScape.



To find out more about our costs and other services we offer, please contact us at info@natureplaynz.co.nz.

Thank you for considering us for your Nature PlayScape playground.

Dean Aplin & Anna Gentry
Co- founders & Directors

Nature Play NZ
www.natureplaynz.co.nz
info@natureplaynz.co.nz



Nature PlayScapes



Nature PlayScapes

Creating Natural Living Playgrounds

Design, Construction & Project Management Services

NaturePlay NZ Ltd is committed to providing natural play resources & playground designs that connect the child's heart to the earth's heart.

What is a Nature PlayScape?

Our designs create places which suggest to the child ~ play freely and openly, explore and discover, find the magic and hold wonder in the earth and all her natural beauty. We emphasize the importance of **living nature, fruits & gardens** and use natural resources to provide play areas that replicate nature's environments.

Nature PlayScape Services

We offer a comprehensive service from consultation & design of your playground, through to project management and construction services.

As each organisation is unique and all sites are different we will tailor the package to meet your specific needs & requirements.

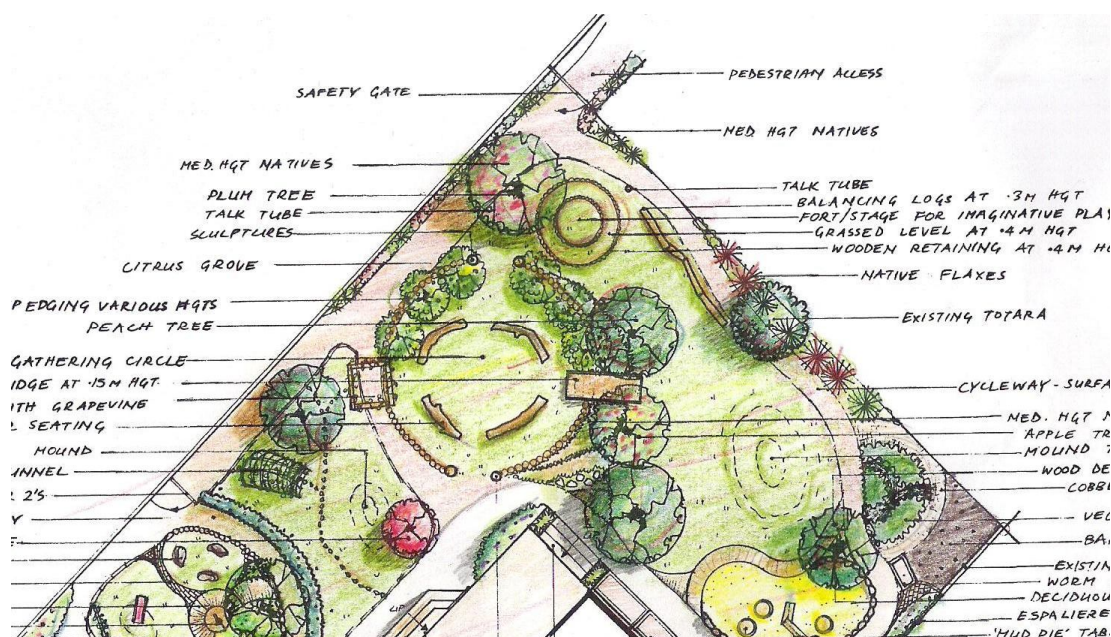
Design Services :

Each playscape design costing is dependent upon the size of the project, scope of design (i.e., requirement for detailed construction plans or planting plans) and the complexities of site (e.g. sloping or flat site, drainage issues).

Full Design Service

The **Full Design Service** is available to both new & existing play areas and involves a three stage process.

1. Consultation, site survey and data assimilation process covering the needs of the centre, children and community. Playground & nature elements are discussed for your design.
2. An initial A1 or A2 sized black and white concept drawing including all playground and nature elements is drafted. This plan is drawn to scale with basic labeling of features, materials and general plantings (including significant trees). You will be provided with two copies of this plan to discuss & consult with staff / community / children. We will then make amendments to the design from your feedback.
3. A final concept plan is drafted to scale on A1 or A2 size and colour rendered. An extra black and white copy will also be provided.



Considerations:

Costs for site visits differ depending on the geographical location of the site. A site visit may not be required if the site is simple and flat. We would require photos and an adequate site plan showing accurate measurements and location of existing equipment & buildings that will remain in the final design.



Complimentary Design Services: We are able to provide other design and construction services.

1. Detailed construction drawings: These are used in the pricing and construction phase to assist with the more complex playground elements. You will receive appropriately sized construction details, drawn to scale with details of dimensions & materials. These drawings are particularly recommended when outside contractors will be involved in the construction phase. It helps to keep the vision true to the design.
2. Planting plans: Show details of all the plant types, quantities and planting location. This is also a valuable process to undertake, especially if NaturePlay NZ is not part of the construction phase.
3. Drafting only service: Give us your plans & design sketches and allow us to create finished drawings that inspire staff, parents, community & funders into your vision and dream.
4. Individual elements: If you require concept plans for individual playground or nature elements, then allow us to support your designing process. We can design and draw any playground or nature element for you, such as water play features, river ways, whares, rock walls, cycleways, orchards and gardens.



We are here to help your visions come alive.